

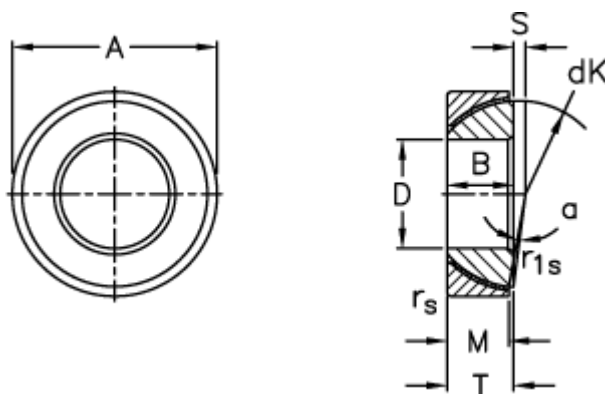
Data Sheet



Article number: 03510110

Description: Fluro Rod end GE 110SW

Measures



A = 170 0 -0,025

B = 38

D = 110 0 -0,020

dK = 155

Dynamic load C (kN) = 940

M = 34

rs, r1s min = 2

S = 13

Static load C0 (kN) = 1880

T = 38 +0,25 -0,60

Tilt angle = 3

Weight = 3680